

PUBLIC AUCTION

MARK THIS DATE
ON YOUR
CALENDAR

Saturday
December 13th
10:00 A.M.

2001 IH SCREAMING EAGLE,
2005 100K TRAILER, SIMM
NEW BUILDING MATERIALS

Absolute Public Auction !!!

2001 IH Screaming Eagle Tractor, 2005 100K

Aluminum Flatbed Trailer w/ cover, \$1,000,000+ Building Materials

Sale Location: 301 S. LaSalle Street, Indianapolis, IN

(DIRECTIONS: Located on the near southside of Indianapolis. From the intersection of Rural Street & English Ave. go east 1/4 mile to LaSalle Street (Stoplight). Turn left or north and go 100 yards north to sale site. Watch for yellow and red auction directional signs.)

TRACTOR & TRAILER: 2001 International 9000 Screaming Eagle Tractor w/ Sleeper; Cat 475; 2005 Reitnouer Big Bubba 100K 45' Aluminum Flat Bed Trailer w/ Full Cover; **(Tractor & Trailer will sale at Noon)** **KITCHENS & BATHS:** (6) Complete Oak, Hickory, Maple & Cherry Kitchens: All Wood, *THESE ARE DESIGNER KITCHENS !!!*; **GRANITE COUNTER SETS:** 39' counter sets w/ 84" slabs w/ sink cutouts, (2) w/ mitred corners, outside corners for ends, backsplash, great colors, *SAVE THOUSANDS !!!*; Lg Qty Granite Shorts; Assorted Kitchen Cabinets & Vanity Bases; Mirrors; Pedestal Sinks; European Low Back Toilets; Kohler Toilets; American Standard Elongated; Faucets; Sinks; Bath Tubs; Showers; Shower Walls; Water Fall Faucets w/ Marble & Glass Bowl Sinks; Vanities and Tops; Vanity Lights; Lg Qtys of Faucets; Toilet Seats; Bathroom Coordinate Sets; Shower Doors; Instant & Electric Water Heaters; Luan 1/4 Underlayment; **SPECTACULAR SELECTION OF BEVELED GLASS ENTRY DOORS:** 6'8" & 8' Beautiful Pella Beveled Glass Entry Doors, Patio Sliding & Swing Doors; *NEW Brazilian Mahogany Beveled Glass Entry Doors*; Metal Clad Entry Doors 1/2 Moon to Full View; **300+ WINDOWS:** 250+ Pella Casement, Double Hung, Bay, Transom & Window Wall; (25+) Vinyl Windows; **FIREPLACES:** Majestic Fire Place Inserts; Fire Place Surrounds; **100+ NEW POWER TOOLS:** Representative Listing: Drill Presses; Cut Off Saws; Tile Cutters; Light Bulbs; Linoleum; Lawn Mowers; Line Trimmers; Ceiling Fans; Roofing Shingles; Copper Wire; Lights; 1700 PSI Power Washers; 2400PSI Gas Power Washers; 20 Gal 5HP Air Compressors; 2 Ton Pneumatic Engine Hoists; 12 Ton Shop Presses; Lots of Cordless Power Tools; 115v Stick Welders; Cosco Alum Folding Ladders/ Scaffolding; Mail Boxes; 3 & 3 1/2 Ton Floor Jacks; Flo Tech Alum Engine headers; ATV Alum Loading Ramps; Alum Race Car Jack Stands; Black & Decker Power Tools; Combo Sets, 18v & 24v Cordless Drills; Air Tanks; Elec. Radiator Heaters; Air Impact Tools & Sockets; Stanley Tools; Eyeglass Display Stands; Brush Cutters; Levels; Clamps; Saw Blades; Laser Levels; Pipe Wrenches; Tool Chests; Oxy/Acety Sets; Welding Supplies; 14" Abrasive Saws; Worm Drive Saws; (50+) Cordless Drill/Drivers; Line Trimmers; Blowers; Chain Saw; Work Tables; Fluorescent Lights; 125AMP Load Centers; Adjustable Shutters; **CARPETNG:** Rolls of carpet, Plush, Berber, Commercial Level Loop, 1st Quality, Good Colors; **CARPET PAD:** #6, 1/2" Pad in 40 yrd Rolls, A Grade; **PATIO DECOR:** Waterfalls, Walkway Solar Lighting; Floating Fountains; Planters; Sprayers; Plant Hangers; **LAMINATE FLOORING:** 1000's Sq Ft, A Grade, Click Lock, Light & Dark Oak, Maple; **PREFINISHED BRUCE WOOD FLOORING:** A Grade, 3/4"x3 1/4" Hickory, 3/4" x 3 1/4" Gunstock, Butterscotch, Natural, Birch, Maple, Walnut; **EXOTIC WOOD FLOORING:** Brazilian Cherry, Teak & Walnut, 1000+ Sq Ft. Bundles, 4' lengths !!!; **CERAMIC FLOOR TILE:** 1000's Sq Ft of Porcelain & Ceramic Tile, 12" & 16" can be used indoor and outdoor; Travertine Floor Tile !!!; Tile Floor Mosaics, 3'x6' & smaller; **WOOD TRIMS & MOLDINGS:** 1000's Colonial Base & Casing, 16' Lengths, Pre Primed; ; Victorian A Grade Pine 5 1/2" x 1 1/16" Base & 3 1/2" x 1 1/16" Casing; **DRYWALL:** (600+) Sheets of 1/2" & 5/8" Drywall, 8',10',12' Lengths, Reg. & Moisture Resistant; **LIGHTING:** Vanity, Exterior, Sconce, Table Lamps, Chandelier, Ceiling Fans w/ Lights; Tiffany Style Chandeliers; Floor Lamps; Weed Killers; Wall Paper; Closet Shelving; Microwaves; Sweepers; Wire Fencing; and much much more!!!

This is only a partial listing as the semi's are still arriving !!!

Send E-Mail to INFO@CLOFA.NET for Color, Illustrated Auction Update PDF !!!

Note: A 10% Buyer's Premium will be added to all items in sale Inspection 8:30 A.M. DAY OF SALE
We specialize in business liquidations All merchandise must be removed by 4:00 P.M., Monday, Dec. 15th

MANY OTHER ITEMS TOO NUMEROUS TO MENTION

**TERMS
CASH**

TERMS: Everything is sold "as is — where is", without any guarantee or warranty by the liquidator. Payment shall be made by **CASH** or **INDIANA BUSINESS CHECK w/ Proper ID and stated buyers premium. WE DO NOT ACCEPT PERSONAL CHECKS.** All purchases must be removed within the time specified. **ALL SALES FINAL.**
ALL ITEMS MUST BE PAID FOR BY THE END OF THE SALE DAY.

**TERMS
CASH**



**COMMERCIAL
LIQUIDATORS**
OF AMERICA

3300 Sutherland Avenue
Indianapolis, Indiana 46218
(317) 632-8040
Fax: (317) 632-4729



FIRST CLASS MAIL
U.S. POSTAGE
PAID
INDIANAPOLIS, IN
PERMIT NO. 9439

FIRST CLASS MAIL

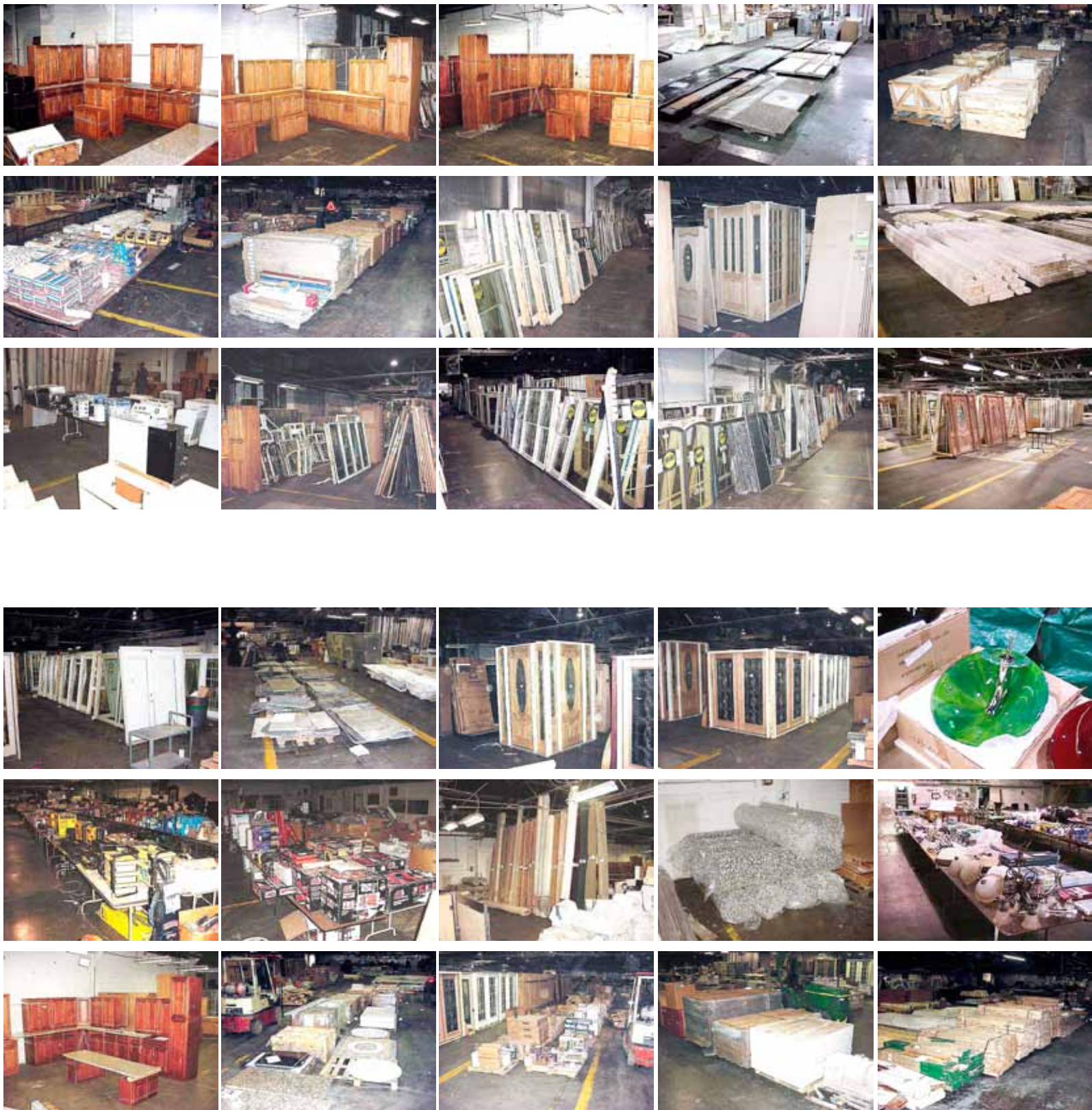
3300 Sutherland Avenue, Indianapolis, IN 46218



\$1,000,000+ Building Materials
301 S. LaSalle Street, Indianapolis, IN
Saturday, December 13th at 10:00 A.M.

If your company is considering relocating, downsizing or liquidating surplus equipment, please call us for a free, no obligation, consultation. In many instances, we can save you or make you thousands of dollars. Please Call: (317) 632-8040

Another Quality Liquidation Sale



2001 IH 9900 Screaming Eagle Tractor & 2005
Reitnauer Big Bubba 45' Aluminum 100K
Heavy Hauler Trailer. 475 Cat C-15 Engine,
Screaming Eagle Limited Edition , Eaton Fuller
Trans., Good Rubber, 574,000 miles,

Should you have any questions concerning these
two units please call Darrell Ketner, former
owner/operator of these units at 765-914-2021.
Darrell can answer any questions you may have
and can give you additional information.







Last Minute Unadvertised Specials to be included in this Sale: Infra Red Swedish Sauna, Huge Qty Christmas Decorations, Lights and Accessories; Light Fixtures; Patio Propane Heaters; Patio Cantilever Umbrellas; Patio Bench Seating; Patio Fire Pit; Victorian Toilets and Pedestal Sinks; 6" Victorian Base Molding; Tools, Tools and more Tools, **YES WE HAVE GENERATORS !!!!**; Engine Hoists; Motorcycle Lifts; Floor Jacks; **HUGE QUANTITIES OF NEW PELLA & POZZI DOORS & WINDOWS:** large quantities of matching groups of metal clad casement, double hung, picture and exterior doors, sets of 30 & 40 units, enough to do an entire house!!!! Vinyl Fence; Laminated Beams; Granite Shorts; Granite Counter Top Sets; Rolls of Carpet & Carpet Pad; Fire Place Fronts; Grills; Coil Roofing Nailers & Compressors; Flooring Nailers; Pressure Washers; Carpet Squares; Lg Qty Interior Pine & Pre Primed Trim; Drywall; Interior 6 Panel Doors; WOW- Coin Operated Kiddy Rides and more, the semi's are still arriving.

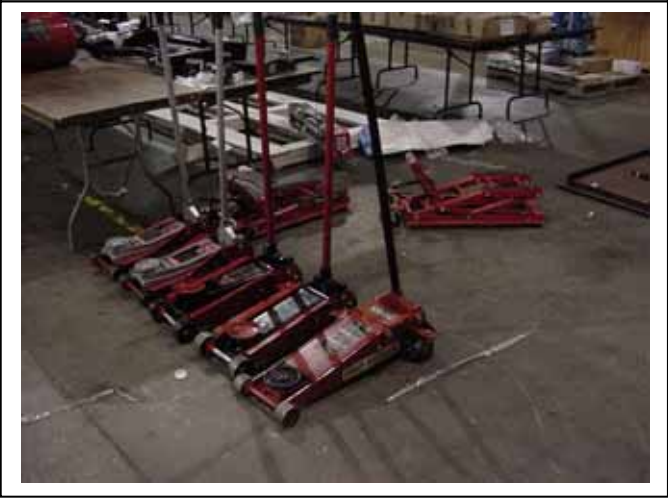
Santa Claus has arrived early !!!















3300 SUTHERLAND AVENUE
INDIANAPOLIS, IN 46218
(317) 632-8040
Fax: (317) 632-3945
E: tedpollard@clofa.net



COMMERCIAL LIQUIDATORS OF AMERICA

AUCTION RESULTS

Building Materials, Tools, Home Furnishings

December 13, 2008

Examples of Items Sold:

2001 International Screaming Eagle Tractor - \$11,550.00	2005 Retinour Big Bubba Trailer - \$8,800.00
[6] Pella White Metal Clad Double Hung Windows w/ Mullion Inserts @\$242 Each - \$1,452.00	New Brazilian Mahogany Zinc Beveled Glass Entry Door w/ Side Lights - \$1,430.00
Pella Triple Light Sliding Metal Clad Entry Door - \$715.00	Pella Triple Metal Clad Patio Door - \$605.00
Pella Thermastar Vinyl Double Hung Window - \$110.00	Granite Vanity Top - \$275.00
Windsor Metal Clad Sliding Patio Door - \$275.00	Vanity Base - \$198.00
Windsor Metal Clad Swing Patio Door - \$495.00	Double Active Swing Patio Door - \$247.50
Double Active French Door - \$165.00	Vanity 2 Bowl Sink - \$132.00
Dewalt 18V Cordless Drill & Reciprocating Saw - \$176.00	Gladiator Mailbox - \$66.00
Ironforce 3 pc. Pneumatic Nailer Set - \$143.00	Dewalt Circular Saw - \$126.50
Hitachi Drill Set - \$88.00	Dewalt Nailer - \$99.00
Gatehouse Lock Set - \$99.00	Bosch Worm Drive Saw - \$104.50
Honda 2500 PSI Pressure Washer - \$110.00	2 Ton Hydraulic Engine Hoist - \$104.50
8 Ton Gas Log Splitter - \$330.00	7,000 Lb. Floor Jack - \$82.50
Dewalt Clipped Head Framing Nailer - \$121.00	Bostitch Coil Roofing Nailer - \$110.00
Milwaukee 18V Cordless Drill Driver - \$99.00	Milwaukee Music Center - \$82.50
Drywall Lift - \$275.00	Skil Router - \$44.00
[1440 L. Ft.] White Preprimed Colonial Base - \$1,504.80	[906 L. Ft.] 6" Victorian Pine Base - \$1,214.40
[1225 Sq. Ft.] Brazilian Hardwood Flooring - \$4,379.38	[512 Sq. Ft.] Stoneware Porcelain Tile - \$788.48
[704 Sq. Ft.] Bruce Hardwood Flooring - \$2,864.40	Forever Tan Screen Door - \$104.50
[14] Maple Kitchen Cabinets - \$1,265.00	[59 Yds.] Berber Carpet - \$454.01
[19] Oak Cathedral Top Kitchen Cabinets - \$1,870.00	[49 Yds.] Plush Tan Carpet - \$363.83
[15] Antq. White Kitchen Cabinets - \$2,090.00	[26 Yds.] Berber Carpet - \$200.20
Anderson Storm Door - \$77.00	[1] Lot Granite Kitchen Countertops - \$1,045.00
6 Panel Oak Door w/ Jamb Set - \$121.00	200 Amp Load Center - \$77.00
Genie Screw Drive Garage Door Opener - \$275.00	Grill Zone Smoker - \$46.75
Panasonic Cinavision HDTV - \$330.00	Sony HDTV - \$330.00
Patio Propane Heater - \$198.00	Cantilever Patio Umbrella - \$198.00
Josen Home Infrared Sauna - \$1,375.00	European Low Back Dual Flush Toilet - \$154.00
Cherry Stained Vanity Base, Sink & Mirror - \$269.50	Granite Top Patio Counter - \$176.00
Waterfall Faucet Sink Bowl - \$77.00	Pella Bronze Metal Clad Picture Window - \$82.50
Coin Operated Racecar - \$302.50	Coin Operated Train - \$385.00

If your company is considering relocating, downsizing or liquidating surplus equipment, or you need an appraisal that represents current market conditions please call us for a free, no obligation consultation. In many cases we can make or save you thousands of dollars.

FOR MORE INFORMATION PLEASE CONTACT TED POLLARD

VOICE: (317) 632-8040 E-MAIL: tedpollard@clofa.net