

# Public Auction Sign Studio, Inc.

Sale Location:

4141 Kingman Drive, Indianapolis, Indiana

Sale Date: **Wednesday, October 29**  
**10:00 A.M.**



2004 F-750 w/TEREX CRANE



20' TRAILER



CHEVROLET 1-TON FLATBED



1999 F-750 w/SPONCO  
AERIAL LADDER



WHITNEY 15" FINGER BRAKE

## TRUCKS

2004 FORD F-750 Superduty, w/Terex 3470 crane, 60k miles, manual 6-spd., 230 hp. Cat turbo diesel, VIN 3FRXF75324V5-98956, Terex Mdl. BT3470, s/n 4490603613, 21' bed, Terex 17-ton cap hydraulic crane, s/n 4490603613, 3-section proportional boom, w/keel design, 3-section pump, 40' 2-section jib, 120' tip height, 2-spd. winch, microguard 586 LMI cap alert, w/operator display monitor, anti two block hydraulic outriggers, removable boom rest, heavy-duty 20' body, under ride protection, 2-man basket; 1999 FORD F-Series Flatbed, w/2000 Sponco aerial ladder, 143K, 4-spd. AT545 auto, Cummins FD1060, 190 hp. diesel, upper and lower diamond plate toolboxes, 16' bed, VIN 3FENF80C1XMA-24674, Sponco unit Mdl. IH55, Sponco PTO system, well insulated; 1983 CHEVROLET 1-Ton Flatbed, 350 gas V8, 4-spd., 12' bed, this truck was completely rebuilt and is LIKE NEW!

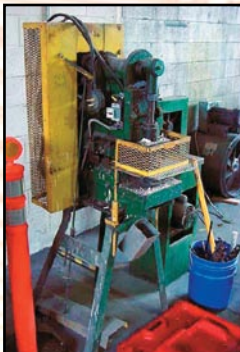
20' Tandem Trailer, elec. brakes, excellent rubber, w/spare.

## EQUIPMENT

2005 NORLOCK Letterlok 4000 Pneumatic Punch; TENNSMITH 10' Manual Brake; WHITNEY JENSEN 15" Finger Brake; SYSTEM 12 HVLP Portable Paint Sprayer.

## WELDERS

MILLERMATIC 135 Wire Feed Welder, 115V; MILLER BobCat 225 CC/CV, AC/DC, 8000-watt generator welder, 632 hrs.; MILLERMATIC 250 Wire Feed Welder; (2) Oxy/Acetyl. Welding Sets; Halogen Work Lights; Adjustable Work Stands; Storage Cabinets; Turbine Blower Motor.



PRESSHEAR NO. 10  
PUNCH PRESS

## GENERATORS

COLEMAN Ultimate 120v/12&24V; 110v Unit; STEELCRAFT 3300 W Generator.

RUOFF Steel Notcher; PRESSHEAR No. 10 Punch Press and Metal Shear, s/n 4278; Blower; Flex Cable Cover; HID Exterior Sign Lights; Safety Eye Wash Station; Nut and Bolt Bins; Bird Repellent; Large Qty. Assortment Fasteners; Transformers; Neon Transformers; Metal Junction Boxes.

HP Sodium Ballasts; 100, 175, 250, 400; H.O. Fluorescent Lamp Ballasts; Bulbs, Bulbs, and More Bulbs; Cases of PHILLIPS and SYLVANIA Fluorescent Light Bulbs, all lengths and types.

(3) BOSCH Jig Saws; Welding Wire; Metal and Concrete Bits; 1" Drive Socket Set; 10-Tray Revolving Parts Stand, loaded; (2) Shop Vacs; EX-CELL 2000 PSI Pressure Washer, Honda gas engine; manual metal shear; blower; (2) Kerosene Salamanders; Wheelbarrows; Air Hose; Tarps.

## LADDERS

32' Fiberglass Ext. Ladder; Folding; 5' Alum; (3) 8', 10', and 12' Fiberglass Step; 8' Rolling Step Ladder.

## POWER & HAND TOOLS

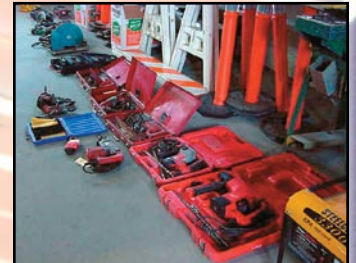
MILWAUKEE Tools; AVS HD Hammer Drill; Hammer Drills; Magnum Drills; Recip. Saws; 14" Abrasive Cut-Off Saw. Rt. Angle Grinder; DE Grinder; Sheet Metal Nibbler; 4" Grinders; Staplers; Hot Air Guns; Belt Sanders; Circ. Saws; Palm Sanders; Ext. Cords; Hose Reels; Clamps; Post Drivers; Shovels; Brooms; Post Hole Diggers; Bolt Cutters; Saws; Chain Dogs; Wire and Vinyl Disp. Stands; Electric Wire; Toolboxes; Cabinets; CAMPBELL-HAUSFELD 5 Hp. Vertical Tank Compressor, 2-stage, 2-cylinder, 1 phase, 230V; Aluminum Shop Cart; 2-Wheel Dolly; 3' Ped. Fan; 3/8" Alum. Flex Wired, 12-2/g and Non-Wired; Full 100' Rolls; WATERTITE Conduit; GE Silicone Sealant; Propane; Grease Guns; Vises; CP Pneumatic Air Riveters; Vise Grip Welding Clamps; Clamps; 5' x 10' Steel Welding Table; HYDE 16" Burner; Tie Down Straps; (20+) Outdoor Parking Lot Lights; IceMelt; Rope; All-Tread Rod; Lockers; Trash Cans; Auto Maintenance Supplies; Pints; Levels; 10' Rolling Sign Carts; (4) Sign Dollies; Safety Welding Tank Cages; Scaffolding; frames, levelers, alum. walk boards and wheels.

## SIGN PRODUCTION EQUIPMENT

APEVIA High Performance Graphics Computer, loaded w/ production software; CYRIUS Software, 5 license; VIEW-SONIC 27" Flat Screen; HP DeskJet 1220C; HP DeskJet 648C; 14' Graphic Layout Table; (3) BESSELAR Opaque Projectors; GRAPTEC Vinyl Cutting Pro FC, Mdl. 410075, 30" cap.; GRAPTEC Vinyl Cutting Pro, Mdl. FC2100-80A; ENCAD Chroma Vinyl Sign Ink Jet Printer, 24" cap.; (75+) Rolls of Vinyl Stock; Vinyl Roll Rack; Large Qty. Alum. Sign Blanks; Plan File; Drafting Table; Large Qty. GE Lexan and Cyro Acrylite Plastic Sheet, 8-1/2' x 12' and 4' x 8', variety of colors; (3) 4' x 8' Alum. Diamond Plate; Alum. Sign Body Sheet; Large Qty. Aluminum Sign Extrusions; PVC Foam Core; ROLLS KEVLAR Sign Face; WEST TRIM and TUFHIDS Sign Wire; Rolls of Alum. Sheet Stock, 5-1/2" to 21"; Large Qty. LED Light Strips, red, blue, green, gold; Transformer Boxes; (4) Outdoor Illuminated Signs, 3' x 16', 4' x 16', 4' x 8'.



10' MANUAL BRAKE



VIEW OF HAND TOOLS



RUOFF NOTCHER



2005  
NORLOCK  
LETTERLOK  
4000



3300 Sutherland Avenue  
Indianapolis, Indiana 46218  
317-632-8040  
Fax: 317-632-4729  
E-Mail: TDPCLA1@aol.com

If your company is considering relocating, downsizing or liquidating surplus assets please call us for a free, no obligation consultation. In many instances we can save you or make you thousands of dollars. Please Call: 317-632-8040

**10:00 A.M.**  
**Wednesday, October 29**

**Sale Date:**  
**Indianapolis, Indiana**  
**Sale Location: 4141 Kingman Drive**

**Public Auction**  
**Sign Studio, Inc.**

3300 Sutherland Avenue  
Indianapolis, Indiana 46218



**First Class Mail**  
**Urgent!!!**  
**Time Sensitive Material!!!**  
**Please Forward to Purchasing Manager**

Presorted  
First Class Mail  
U.S. Postage  
PAID  
Eugene, Oregon  
Permit No. 305

**Bidders Information**

**Sale Date:** Wednesday, October 29, 10:00 A.M.  
**Inspection Information:** 8:30 A.M. Day of Sale  
**Sale Location:** 4141 Kingman Dr., Indianapolis, Indiana  
**Directions:** Located on the East side of Indianapolis. From the Intersection of I-465 and Pendleton Pike, go west on Pendleton Pike 1/3 mile to Kingman Drive. Turn right or north and follow yellow and red auction signs to sale site.  
**Payment: ITEMS PURCHASED AT AUCTION:** Full payment must be made for all items prior to removal and by **End of Sale Day** by cash, Visa/MasterCard only, certified check or in-state business check w/proper ID. If you are presenting an out-of-state check, check must be accompanied with irrevocable bank letter of guarantee. There will be a 10% Buyer's Premium in effect for this sale.  
**WE DO NOT ACCEPT PERSONAL CHECKS.**

**Removal:** Bidders shall have until Friday, October 31, 4:00 P.M. to remove equipment from auction location. Any items not removed from premises by 4:00 P.M., Friday, October 31 shall be considered abandoned and Bidder shall lose all right, title and interest in the equipment. Bidders DO NOT have right of abandonment and Bidders shall additionally be responsible for any disposal and removal costs incurred by Commercial Liquidators of America due to the removal and/or disposal of any abandoned items.

Jerry Lumpkin, AU01020293, Asset Managers, AC30200069  
**Send E-Mail to TDPCLA1@aol.com for color, illustrated PDF Auction Update.**

If your company is considering relocating, downsizing or liquidating surplus assets please call us for a free, no obligation consultation. In many instances we can save you or make you thousands of dollars.  
Please Call: 317-632-8040  
or E-Mail: TDPCLA1@aol.com



MILLER BOBCAT 225



VIEW OF BALLASTS



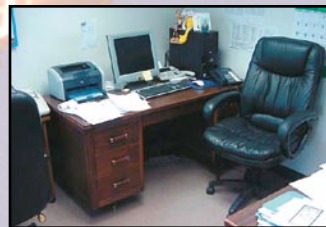
ENCAD 24" VINYL INK JET PRINTER



GRAPHTEC 30" VINYL CUTTER



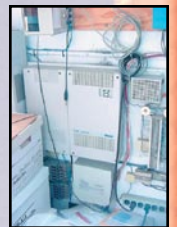
APEVIA GRAPHICS COMPUTER



SAMPLE OFFICE



EXECUTIVE OAK OFFICE SUITE



TOSHIBA PHONE SYSTEM

**OFFICE FURNITURE & EQUIPMENT**

Beautiful Golden Oak Executive Office Suite: Oak Rolltop Desk; Oak Raised Panel Exec. Desk; (2) Oak Barrel Back Chairs; (2) 2- and 4-Dr. Oak Vertical Files; Brown Leather Highback Exec. Chairs; (3) HON Black 4-Dr. Vertical Files; (7) Oak Framed Cloth Sat Sidechairs; (3) Oak Exec. Desk and Credenza Set; Walnut "L" Desk, w/cred.; Oak Computer Workstation; (5) Black Leather Chairs; Steelcase Side Chair; Chrome Wall Clock; 4-Dr. Fireproof File; (3) 6" Resin Black Stock Shelves; PROTEGE CD Player; Storage Cabinets; FELLOWS Paper Shredder; XEROX XC1044 Desktop Copier; HP OfficeJet All-In-One; HP Color Laser Jet 2550N Printer; AMANO Pix-10 Digital Time Clock; "L" Computer Work Center; 6' Metal Storage Shelves.

**PHONE SYSTEM**

STRATA DK40 Digital Phone System, w/Toshiba handsets, MdL, DKSUB40A, lightning suppression protection, 10-line, 40-extension.

**BREAKROOM**

Chairs; Water Cooler; Refrigerator; Microwave; Table; Broiler Oven.

**COMPUTERS**

GATEWAY Computer, w/flat screen and printer.

**NEON SIGNS**

"FOSSIL" Auto Sign; "MOTOTOWN Martini Bar" Sign; "NEON" Sign; "OLD NAVY JEANS" Sign; Many Neon Colored 6' Light Strips; Neon Color Sample Case, w/40+ samples; and much, much more!



MILLER 250 WELDER