

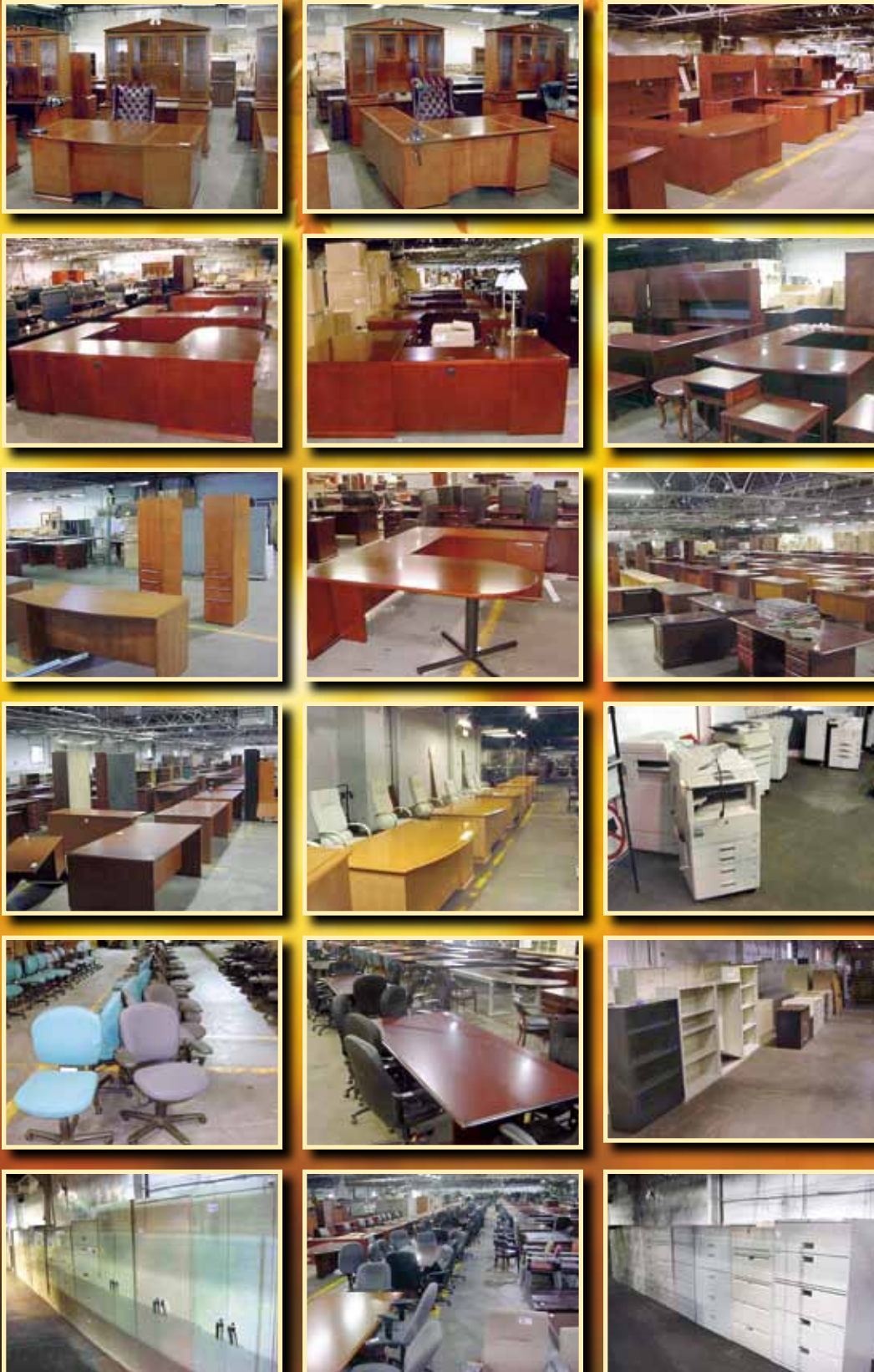
# Absolute Public Auction

## \$1,000,000 NEW Executive Office Furniture & Supplies

Massive Liquidation of NEW Executive Office Furniture from America's World-Renowned Manufacturers, plus Semi Loads of NEW Office Supplies from Regional Distributor. If you are looking to upgrade or furnish your office and SAVE Money, you cannot afford to miss this **FANTASTIC ABSOLUTE PUBLIC AUCTION!**

**Sale Date:**  
**Tuesday, October 5**  
**10:00 A.M.**

**Sale Location:**  
**301 S. LaSalle Street**  
**Indianapolis, Indiana**



### (50+) EXECUTIVE OFFICE SUITES

(4) PAOLI Medina Williamsburg Burl Cherry Executive Suites: Traditional and Bowfront Desks w>Returns, Lateral File and Computer Credenzas, Williamsburg Etched-Glass Hutch Tops, 2- and 4-Dr. Lateral Files, **RETAIL VALUE OVER \$10,000**; PAOLI Walnut Executive "U" Workcenters w/Bow Front Desk and Inlay Top, **RETAIL VALUE OVER \$7,000**; Walnut Executive "U" Workcenters w/Fluted Edge; Cherry "L" Desks w/Fluted Edge and Matching 3-Dr. Lateral Files; Walnut Raised Panel Desks w/Credenzas, 4-Dr. Lateral Files and Computer Desks; (10) Walnut and Cherry Executive Suites w/Raised Panels, Fluted Edge, Double Pedestal, Traditional and Bow Front, Lateral Files, Computer Credenzas w/Open Bookcases and Closed Front Hutch Tops; (10+) NEW Brazilian 36" x 72" and 30" x 72" Desk Tops; SO MUCH MORE!

### COPIERS

SHARP, CANON Digital Color Copiers; Demo, LIKE NEW, TOSHIBA E Studio Copier.

### SEATING FOR (250+)

We Have Large Quantities of NEW Chairs! NEW Side Chairs in Assorted Styles and Colors; Task and Black Leather High Back Executive Chairs; Walnut Framed Lyre Back Side Chairs w/Cloth Cushion Seat; Queen Anne Side Chairs; Grey Cloth Pneumatic Armed Conference Chairs; Blue/Grey and Black Cloth Pneumatic Task Chairs; (40+) Sec. Chairs; Lamp Tables and Lamps; Artificial Trees.

### RECEPTION AREA FURNITURE

Maple Receptionist Desk, Waiting Area Chairs, End Tables, MORE!

### CONFERENCE SETS

(3) 8'-12' Cherry Race Track Conference Tables, w/Fluted Edge; (5) 3' and 4' Walnut and Cherry Round Conference Tables, Barrel and Queen Anne Bases; (3) 8' Walnut Rectangular Conference Tables; Conference Room Display Boards; Conference Chairs.

### (100+) FILING CABINETS

Some NEW: 2-, 3-, 4- and 5-Dr. Lateral and Vertical, Letter and Legal Size; 6' Storage Cabinets; Wood and Metal 3'-6' Bookcases; Training Tables; A/V Carts; Printer Stands.

**If You Use It in an Office**  
**We Have It!**



301 S. LaSalle Street  
Indianapolis, Indiana 46201  
317-632-8040 • Fax: 317-632-3945  
E-Mail: [INFO@CLOFA.NET](mailto:INFO@CLOFA.NET) • [WWW.CLOFA.NET](http://WWW.CLOFA.NET)

Be sure to check our website [WWW.CLOFA.NET](http://WWW.CLOFA.NET)  
for additional pictures and details

If your company is considering relocating, downsizing or liquidating surplus assets please call us for a free, no obligation consultation. In many instances we can save you thousands of dollars.  
Please Call: 317-632-8040 or email info@clofa.net.

301 S. LaSalle Street, Indianapolis, IN

Sale Location:

10:00 A.M.

October 5

Tuesday

Sale Date:

# Absolute Public Auction

## \$1,000,000 NEW Executive Office Furniture & Supplies

301 S. LaSalle Street  
Indianapolis, Indiana 46201



Please Forward to Purchasing Manager

**Time Sensitive Material!!!**

Presorted  
First Class Mail  
U.S. Postage  
PAID  
Eugene, Oregon  
Permit No. 17

**Urgent!!!**

**First Class Mail**

# Absolute Public Auction

## \$1,000,000 NEW Executive Office Furniture & Supplies



### SEMI LOADS OF NEW OFFICE SUPPLIES

We have everything you could use in an office, selling at Absolute Auction Prices!  
Credit Card/CD/Paper Shredders; Coat Trees; Dry and Pin Boards; Organizers; Certificate Forms; Keyboards; Calculators; Indexes; Power and Manual Three-Hole Punches; Perforators; Electric and Deep Throat Staplers; Tape Dispensers; Day Timers; Paper Pads; Coffee Makers; Postage Scales; Heaters; Fans; HOWARD MILLER Wall Clocks; Totes; Desk Lamps; Money Boxes; Storage Totes; Copy Holders; Plastic File Holders; Cases, Cases and Cases of White and Colored Copy Paper; Envelopes; Files; Report Covers; Cases of Binders; Trash Cans; Form Files; Foot Supports; Articulated Keyboard Trays; Desk Pads; Money Bags and Coin Wrap; Shelving; Bankers' Storage Boxes; Desk Pads; Binders; Laser Labels; Blank DVDs and CDs; Cordless Phones; File Holders; Desk Organizers; Message Books, Desk Pads, ID Badge Makers, Manila, Other Folders and File Pockets, Chair Mats, Pens, Highlighters, Calculators, Soap, Liners, Certificate and Picture Frames, Cups, Label Makers, Organizers, Sorters, Monitor Holders, Keyboard Trays, Mouse Pads, Punches, Notebooks, Price Markers, and MORE!

### BIDDERS' INFORMATION

**Sale Date:** Tuesday, October 5th, 10:00 A.M.

**Sale Locations:** 301 S. LaSalle Street, Indianapolis, IN

**Directions:** Located on the near southside of Indianapolis. From the intersection of Rural Street and English Ave., go east 1/4 mile to LaSalle Street (stoplight). Turn left or north and go 100 yards north to sale site. Watch for yellow and red auction directional signs.

**Payment:** ITEMS PURCHASED AT AUCTION: Full payment must be made for all items prior to removal and by **End of Sale Day** by cash, Visa/Master Card only, certified check or in-state business check **ONLY** when accompanied by an irrevocable Bank Letter of Guarantee. If you are presenting an out-of-state check, check must be accompanied with irrevocable bank letter of guarantee. There will be a 10% Buyer's Premium in effect for this sale. We must collect sales tax unless you have a Retail Merchants Certificate. **WE DO NOT ACCEPT PERSONAL CHECKS.**

**Inspection Information:** 8:30 A.M. Day of Sale.

**Removal:** Bidders shall have until **Wednesday, October 6, 4:00 P.M.** to remove merchandise from auction location. Any items not removed from premises by **4:00 P.M., Wednesday, October 6** shall be considered abandoned and Bidder shall lose all right, title and interest in the equipment. Bidders **DO NOT** have right of abandonment and Bidders shall additionally be responsible for any disposal and removal costs incurred by Commercial Liquidators of America due to the removal and/or disposal of any abandoned items. Announcements day of sale take precedence over any printed material. General Consignment Sale.

Jerry Lumpkin, AU01020293, Asset Managers, AC30200069

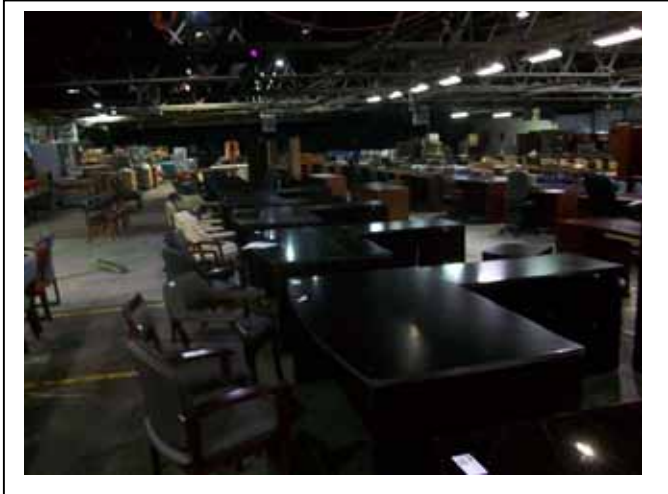
Send E-Mail to [INFO@CLOFA.NET](mailto:INFO@CLOFA.NET) for detailed illustrated color PDF auction brochure.



**There is no way we have room to list everything!**

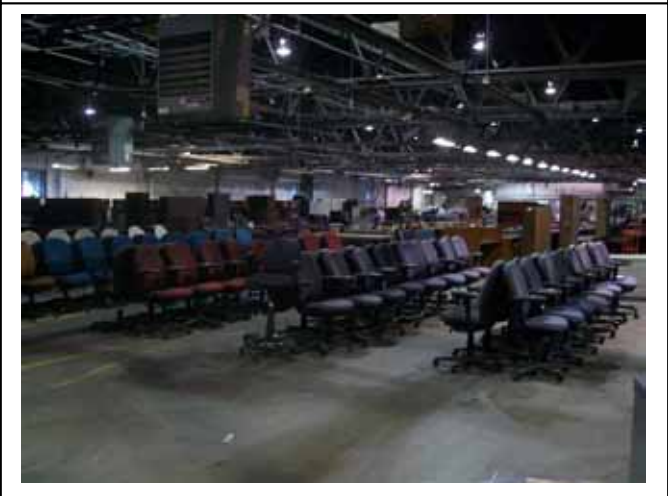
**Be sure to check our website [WWW.CLOFA.NET](http://WWW.CLOFA.NET) for additional pictures and details**

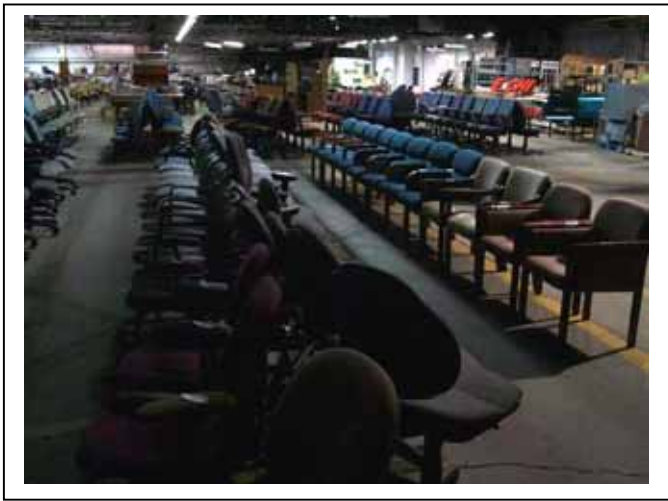


















301 S LASALLE ST  
INDIANAPOLIS, IN 46201  
(317) 632-8040  
Fax: (317) 632-3945  
E: info@clofa.net



## COMMERCIAL LIQUIDATORS OF AMERICA

\*\*\*AUCTION RESULTS\*\*\*

### Executive Office Auction

Sale Date: October 5, 2010

Registered Bidders: 94

#### Examples of Items Sold:

- |   |  |
|---|--|
| [4] Paoli Medina Burl Cherry Inlay Executive Desks & Computer Credenzas w/ Williamsburg Etched Glass Illuminated Hutch Tops @\$3520.00 each - \$14,080.00 | [3] 8' Walnut Rectangular Conference Tables @\$660.00 each - \$1980.00                           |
| [4] High Gloss Emerald Sapphire Double Ped. Executive Desks w/ Credenzas @\$1,430.00 each - \$5,720.00  | Canon Black & White Copier - \$1375.00   |
| [5] Walnut Emerald Sapphire Bow Front Fluted Edge Exec. Desks w/ Returns @\$522.50 each - \$2,612.50  | Toshiba Black & White Copier - \$1,155.00  |
| Paoli Walnut Executive "U" Work Station - \$935.00  | [6] 3' Emerald Sapphire Bookcases @\$77 each - \$462.00  |
| Paoli Bullet Front Walnut Exec. "U" Work Station - \$935.00   | [5] Walnut Emerald Sapphire Bow Front Exec. Desks w/ Kneehole Credenzas @\$495 each - \$2,475.00 |
| Cherry Fluted Edge Receptionist Station - \$275.00  | Barrel Back Sofa - \$330.00  |
| [6] Black Leather Walnut Frame Side Chairs @\$110.00 each - \$660.00  | [3] Walnut Frame Print Cloth Side Chairs @\$33.00 each - \$99.00                                 |
| [4] Walnut Frame Print Cloth Barrel Back Side Chairs w/ Brass Tacking @\$38.50 each - \$154.00  | [4] Hon Black 2 Drawer Lateral Files @\$99 ea - \$396.00   |
| [22] Steelcase Red Cloth Ergonomic Task Chairs @\$49.50 each - \$1089.00  | [5] Black Leather Barrel Back Walnut Frame Side Chairs @\$110.00 each - \$550.00                 |
| [13] Steelcase Blue Cloth Ergonomic Task Chairs @\$44.00 each - \$572.00  | [2] White Cloth Barrel Back Side Chairs @\$44ea - \$88   |
| [22] Gray Cloth Barrel Back Conference Chairs on Wheels @\$33.00 each - \$726.00  | [11] 5 Drawer Vertical Files w/ Side Wardrobe @\$27.50 each - \$302.50                           |
| [3] 4' Cherry Grain Top Work Tables @\$110.00 ea - \$330.00   | Golden Gate Picture, Plane Picture @\$66 each - \$132.00   |
| [2] Maple Bow Front Executive Desks @\$192.50 ea - \$385.00   | [4] Cases Portfolios @\$16.50 each - \$66.00   |
| [3] Walnut Frame Gray Print Cloth Side Chairs @\$38.50 each - \$115.50  | [4] 2 Drawer Letter Files @\$19.25 each - \$77.00  |
| [12] Cases White Copy Paper @\$24.20 each - \$290.40  | [2] Walnut Barrel Back Banker's Chairs @\$77 ea - \$154  |
| [16] Reams White Copy Paper @\$11.00 each - \$176.00  | Sanyo Small Refrigerator - \$49.50   |
| [5] Boxes Tyvek Expansion Envelopes @\$9.90 each - \$49.50  | [2] Walnut End Tables @\$44.00 each - \$88.00  |
| [2] Commercial Stainless Coffee Makers @\$35.75 ea - \$71.50  | [5] Walnut Frame Brown Print Cloth Side Chairs - @\$33.00 each - \$165.00                        |
| [4] Brushed Nickel Desk Lamps @\$16.50 each - \$66.00   | [10] Cases White Copy Paper @\$22.00 each - \$220.00   |
| Universal HD Large Capacity Paper Shredder - \$38.50  | [19] Reams Yellow Copy Paper @\$3.30 each - \$62.70  |
| [2] Sharp Desktop Calculators @\$33.00 each - \$66.00   | Rolling Briefcase - \$30.25  |
| [1] Lot Paper Pads, Workbooks - \$19.25   | Rubbermaid Mop Bucket - \$27.50  |
| Swingline HD Stapler - \$22.00  | Black Back Rest - \$23.10  |
|   | [3] Boxes File Folders @\$11.00 each - \$33.00   |
|   | [1] Lot Sign Holders - \$35.75   |
|   | [1] Lot Post-it Notes - \$12.10  |
|   | Swingline Paper Cutter - \$24.75   |

\*\*\*\*\*

If your company is considering relocating, downsizing or liquidating surplus equipment, or you need an appraisal that represents current market conditions please call us for a free, no obligation consultation. In many cases we can make or save you thousands of dollars.

**FOR MORE INFORMATION PLEASE CONTACT TED POLLARD**

**VOICE: (317) 632-8040 E-MAIL: info@clofa.net**