

Absolute Public Auction

Columbus Inn Bed & Breakfast

Sale Location:

445 5th Street, Columbus, Indiana

Saturday, September 27

10:00 A.M.



Early English Quarter-Sawn Oak Bow Front Side Board



Early Clawfoot Burl Buffet
w/Cranberry Etched Glass Lamps



Rosewood Roll Arm Sofa



Large Victorian Wall Mirror w/Wingback & Fireside Chairs



The Internationally Renowned *Columbus Inn Bed & Breakfast*
Has Been Ordered Liquidated in Its Entirety Due to the
Sale of the Property.

This Award-Winning Establishment of (35) Rooms, (4) Floors,
and Over 150,000 Square Feet Was Recently Remodeled
& Furnished With the Most Incredible Collection of Antiques
We Have Ever Had the Privilege of Selling.

This Is a Once-in-a-Lifetime ABSOLUTE PUBLIC AUCTION!



**COMMERCIAL
LIQUIDATORS**
OF AMERICA

3300 Sutherland Avenue
Indianapolis, Indiana 46218
317-632-8040
Fax: 317-632-4729
E-Mail: TDPCLAI@aol.com



2-Section Victorian Loveseat



Victorian Walnut 3-Section Loveseat



Cathedral Side Chairs w/Walnut Game Tables



Victorian Walnut Pier Mirror



Walnut Victorian Hotel Washstand



Walnut Victorian Headboard w/Fret Work



Burl Walnut China Cabinet



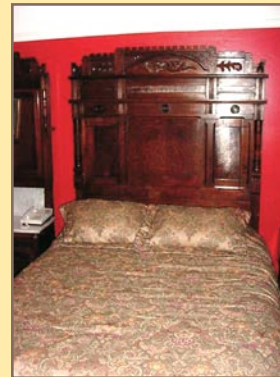
Chifferobe



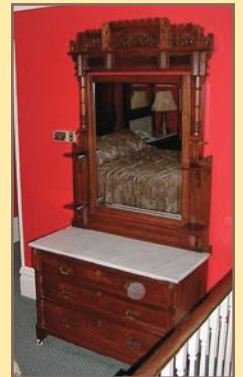
Walnut Victorian Bed



Walnut Victorian Love Seat



3-Pc. Eastlake Walnut Bedroom Suite: Burl Washstand, Dresser & Bed



Oval Marble-Top Table w/Lionhead Victorian St. Chairs



Duncan Phyfe-Style Drop-Leaf Table

ANTIQUES: Mahogany Clawfoot Loveseat; Rosewood Roll Arm Sofa; Burl Walnut Victorian Loveseat; Walnut Lamp Table; Cherry Drop-Leaf End Table w/(2) Drawers; Walnut Victorian Lamp Table; Burl Walnut Armoire w/Drawer; Walnut Eastlake Loveseat; Walnut Victorian Pier Mirror Marble-Top Vase Shelf; Walnut Victorian Bed; Victorian Marble-Top Hotel Wash Stand w/Tilt Mirror; Victorian Upholstered Chair w/Carved Lionhead Arms; 1920s Red Velvet Sofa; Empire 2-Dr. Burl Walnut Lamp Table;

Burl Walnut Chain Cabinet; Red Velvet Over-Stuffed Chair; Victorian Dining Chairs w/Fruit Top Carvings; Early Clawfoot Burl Buffet; Etched Cranberry Marble-Based Lamps; 1920s Spooled Occasional Table; Marble-Top Oval Table; Lionhead Victorian Style Straight Armed Chairs; 3-Pc. Walnut Eastlake Bedroom Suite w/Marble Tops: Bed, Washstand & Dresser; Turn of Century Lyre-Back Chairs; 1800s Side Chairs; DUNCAN PHYFE-Style Drop-Leaf Tables; 3-Section Walnut Carved Victorian Loveseat; Sq. Mahogany Victorian-Style Lamp Table; Large Victorian Wall Mirror w/Walnut, Burl & Ebony Woods & Marble Sill; Antique Wingback & Fireplace Chairs; Victorian Style Straight Chairs; (2) Victorian Walnut Claw-Footed Victorian Game Tables; (4) Cathedral-Style Spooled Chairs; Marble-Top Table/Desk w/Winged Sphinx & Heavily Carved; Victorian Burl Walnut 2-Glass Door Bookcase w/Drawer & Galley Top; Walnut Victorian Headboard w/Serious Fretwork; Nightstand Cabinet w/Drawer; Chifferobe; Quarter-Sawn Oak Early English Bowfront Side Board w/Ornate Brass Hinge Work & Wood Applica.; DUNCAN PHYFE-Style Side Board.



Lionhead Victorian Chair



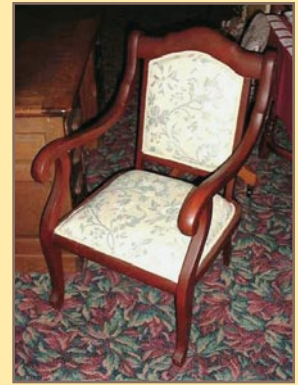
Empire 2-Dr. Walnut Burl Lamp Table



Eli Terry Jr. Weight Clock



Turn of Century Lyre-Back Chair



1800s Side Chair



Marble-Top Table w/Heavily Carved Sphinx Body Legs



Victorian Dining Chairs w/Fruit Carvings



Victorian Lamp Table & Chairs



Walnut Sq. Table Lamp



Cherry Sleigh Bed



Room Grouping

CLOCK: ELI TERRY JR. Weight Mantel Clock, Manufactured Plymouth Hollow, Mass., Built 1841–1924, Ornate Clock Face, Finished Movements, Walnut Face w/Claw Feet, Ornate Carved Columns; Oak Library w/Leather Inlay Center; Awesome 4'x5' Golden Oak Quarter-Sawn Partners Desk w/Carved Pulls & Raised Panel Sides; (2) Patina Venus & Mars Statue Lamps; 30"x30" Walnut Table; (2) Walnut Side Table Lamp Stands; (2) Brass Urn Lamps w/Ivy & Lion Heads; (2) Hurricane Shade Lamps; MASON & HAMLIN Mahogany Piano; Pressed Metal Ceiling Tiles; Oak Shoe Polish Box; Brass Roman Column Table Lamps; (2) Brass Grecian Vase Lamps w/Ivy & Faces; 4' Walnut Rope Edge Table w/Glass Top & 3 Lion Claw Base; **SPECTACULAR SELECTION OF (40+) UNIQUE ANTIQUE CHAIRS:** (2) Wood High Chairs; (40+) Very Nice Floral Arrangements w/Decorative Planters; Oriental Flower Pots; Walnut Side Table; 6' White Bookcase; White 6' Storage Cabinet; **LIBRARY BOOKS:** (100+) Library of Books from the 1800s & early 1900s; **ROOM FURNISHINGS:** (29+) Standardized Suites w/Cherry Queen-Size Sleigh Beds, Cherry Library Table w/Leather Inlay & 2-Pull Wings, Cherry Armoire, 36" Interior, (2) Cherry Nightstands; Brass Column Floor lamps; THESE SUITES ARE BEAUTIFUL!; Irons; Microwaves; Hair Dryers; FLEX STEEL Loveseats & Sofas; Cherry Oval Coffee Tables; Brass Floor Lamps w/Marble Tables; Apartment Refrigerators; (35+) JAMESON Queen Pillow-Top Mattress & Box Spring Sets; **BEAUTIFUL ARTWORK:** (50+) Wonderful Pieces of Framed Artwork; Gold Leaf Frames; (14) Brass Planters w/Plants; ZENITH Concierge 36" TV; (35+) ZENITH 27" TVs; **FOOD SERVICE SEATING & EQUIPMENT:** (16+) Walnut 2- & 4-Top Tables w/Turned Urn Bases; (60+) Walnut Framed Dining Chairs w/Cloth Seats; DELFIELD S.S. Single Door Refrigerator w/Digital Display; (2) FRIGIDAIRE Upright Commercial

Freezer & Refrigerators; (2) SCOTSMAN Undercounter Icemakers; HOBART LX30 S.S. Undercounter Dishwasher; Oversized S.S. Wall Hand Sink; Sq., Oval, & Round Chafing Stands; SOUTHBEND Single Oven w/6-Burner Gas Range & Overshelf; 4'x3' S.S. Exhaust Hood; SHARP Commercial Microwave Oven; BUNN Double CW Series Platinum Coffee Brewer; Savory ST-Mini Conveyor Toaster; S.S. Rolling Bus Cart; Overhead Pot Rack; SAMSUNG Microwave; Large Qty. Pots, Pans, Skillets, Inserts, Stock Pots & Utensils; BUNN Pour-o-Matic Coffee Maker; Large Qty. Glassware; KITCHENAID Mixer; English White China; HOMER LAUGHLIN Fiesta Colored China; 6-Vend Coke Machine; Rolling Sheet Pan Rack; Serving Trays; Bus Carts; Range Chest Freezer; Employee Lockers; HOMER LAUGHLIN & STEELITE White China; Very Nice Tea & Coffee Sets; Unique Print China; Brunch Equipment; **BANQUET EQUIPMENT:** (75+) Gold-Framed Stack Chairs w/3" Cushion Seats & Backs; (14+) Folding Tables; Overhead Projector; Shelving; (2) Walnut Speakers Podiums; Easel Stands; Projector Screens; **LAUNDRY FACILITY:** (2) CISSEL 50-Lb. Commercial Gas Dryers; MILNOR 50" Front-Load Commercial Washer, Mdl. 30020NSE/ABA; S.S. Rolling Luggage Cart; 100s Towels, Linens, Covers, Sheets Sets, Etc.; Linen Folding Table; Large Qty. of Washing & Cleaning Supplies; **HOTEL EQUIPMENT:** Office Executive Suite w/Desktop, Bookcase Cabinets & 2-Dr. Lateral Files; (2) Black 4-Dr. Files; (4) Fold-Up Rolling Beds; (2) L.A. Baby Fold-Up Crib Beds; ORECK XL Sweeper; 24', 12', & 6' Fiberglass & Alum. Ext. & Step-Ladders; 5.5 HP 24" Gas Snow Blower, only used two times; Gas Power Blower; Complete Maintenance Shop w/Tools, Supplies; and More!!!



Saturday, September 27
10:00 A.M.

Columbus Inn
Bed & Breakfast
Sale Location:
Columbus, Indiana

AUCTION
Absolute Public

3300 Sutherland Avenue
Indianapolis, Indiana 46218



Please Forward to Purchasing Manager

Time Sensitive Material!!!

Presorted
First Class Mail
U.S. Postage
PAID
Eugene, Oregon
Permit No. 305

Urgent!!!
First Class Mail

Bidder's Information

Sale Date: Saturday, September 27, 10:00 A.M.
Inspection Information: 8:30 A.M. Day of Sale
Sale Location: 445 5th Street, Columbus, Indiana
Directions: Off I-65, Exit 68 (SR46) Go east into Columbus. Follow SR46 across the bridge and to Franklin Street. Turn left or north. Go north to 5th Street and turn left. Follow yellow and red auction signs to sale site.
Payment: ITEMS PURCHASED AT AUCTION: Full payment must be made for all items prior to removal and by **End of Sale Day** by cash, Visa/Master Card only, certified check or in-state business check w/proper ID. If you are presenting an out-of-state check, check must be accompanied with irrevocable bank letter of guarantee. There will be a 10% Buyer's Premium in effect for this sale.

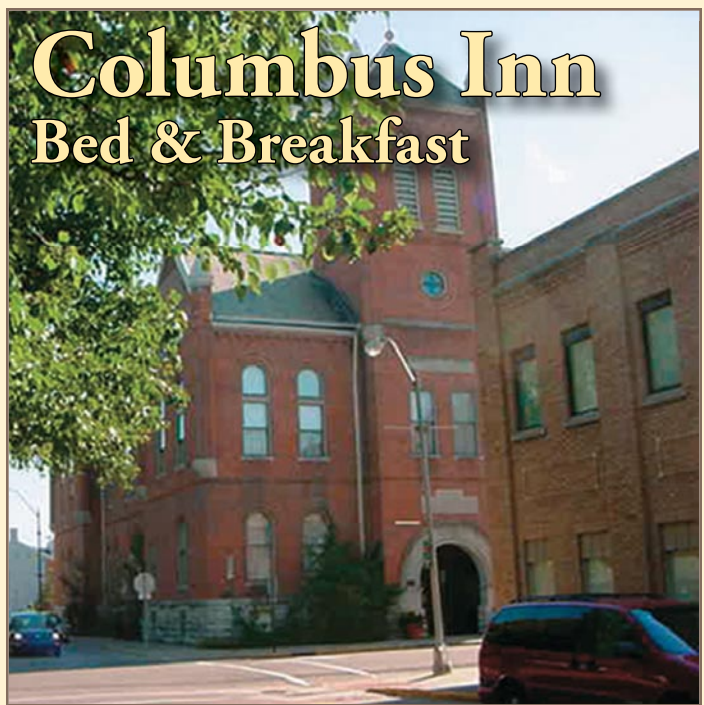
WE DO NOT ACCEPT PERSONAL CHECKS.
Removal: Bidders shall have until Tuesday, September 30, 4:00 P.M. to remove equipment from auction location. Any items not removed from premises by 4:00 P.M., Tuesday, September 30 shall be considered abandoned and Bidder shall lose all right, title and interest in the equipment. Bidders DO NOT have right of abandonment and Bidders shall additionally be responsible for any disposal and removal costs incurred by Commercial Liquidators of America due to the removal and/or disposal of any abandoned items.
Jerry Lumpkin, AU01020293, Asset Managers, AC30200069
Send E-Mail to TDPCLA1@aol.com for color, illustrated PDF Auction Update



Victorian Walnut 2-Dr. Glass Bookcase w/Galley Top



Burl Walnut Armoire w/Drawer



Columbus Inn
Bed & Breakfast

**Award-Winning Establishment of (35) Rooms,
(4) Floors, and Over 150,000 Square Feet**

**Sale Location:
Columbus, Indiana**

If your company is considering relocating, downsizing or liquidating surplus assets please call us for a free, no obligation consultation. In many instances we can save you or make you thousands of dollars.
Please Call: 317-632-8040 or E: TDPCLA1@aol.com